






Student Health Decision Tree

Screen all students for potential COVID-19 symptoms or exposure

Symptoms commonly found with COVID-19 or other viral infections

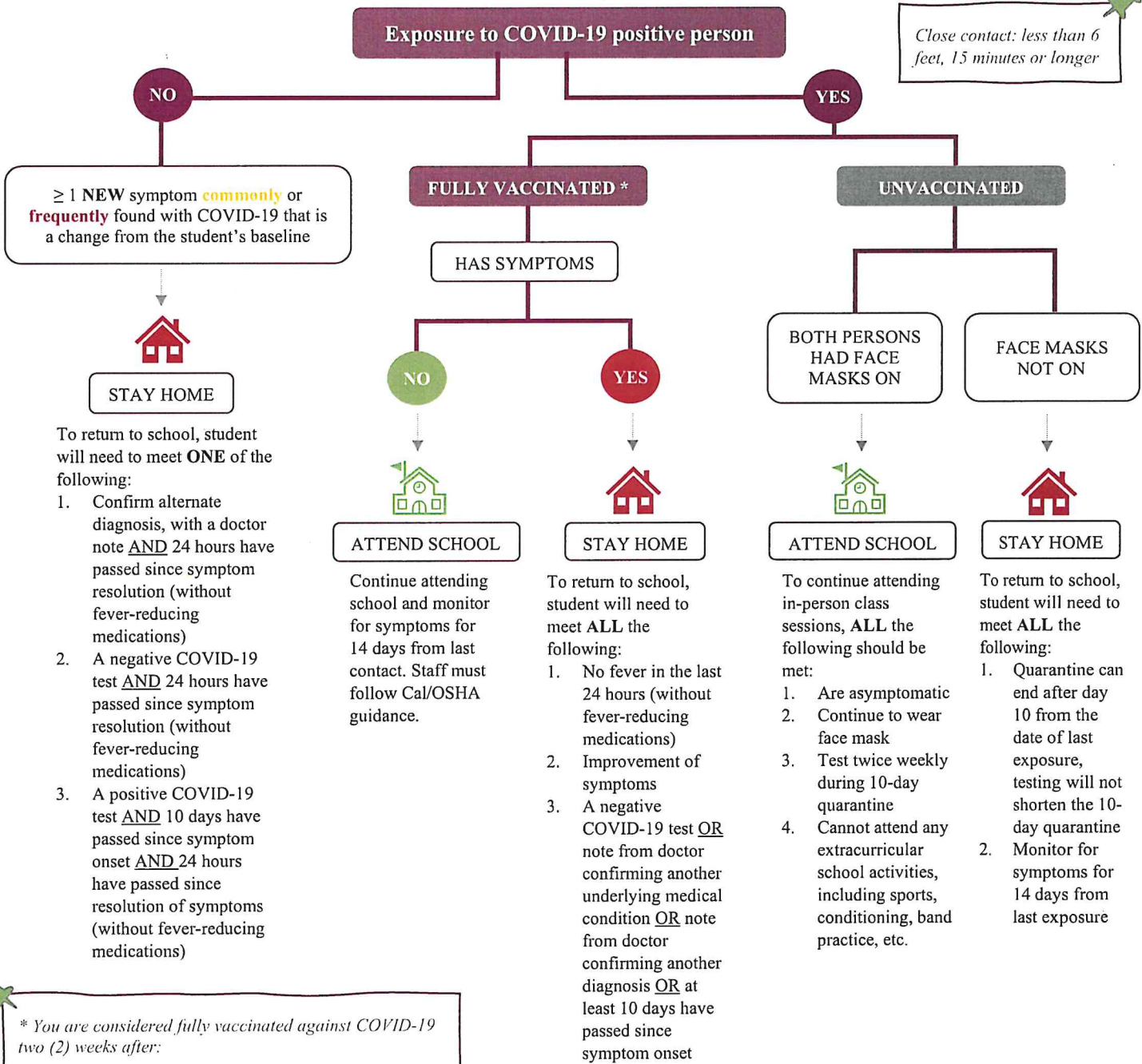
Symptoms frequently associated with COVID-19

-  Sore throat
-  Congestion/ runny nose
-  Nausea/ vomiting/ diarrhea

-  Headache
-  Fatigue/ muscle or body aches

-  Fever ($\geq 99.5^{\circ}\text{F}$)
-  Cough
-  Difficulty breathing
-  Loss of taste/ smell

Close contact: less than 6 feet, 15 minutes or longer



* You are considered fully vaccinated against COVID-19 two (2) weeks after:

- You received a single-dose of the Johnson & Johnson/Janssen COVID-19 vaccine, OR
- You received a second dose of a Pfizer or Moderna COVID-19 vaccine

Rev. 08/13/2021

This care pathway was designed to assist school personnel and is not intended to replace the clinician's judgment or establish a protocol for all patients with a particular condition. Diagnosis and treatment should be under the close supervision of a qualified health care provider.